



# AI Counter-Terrorism

Geospatial Analysis

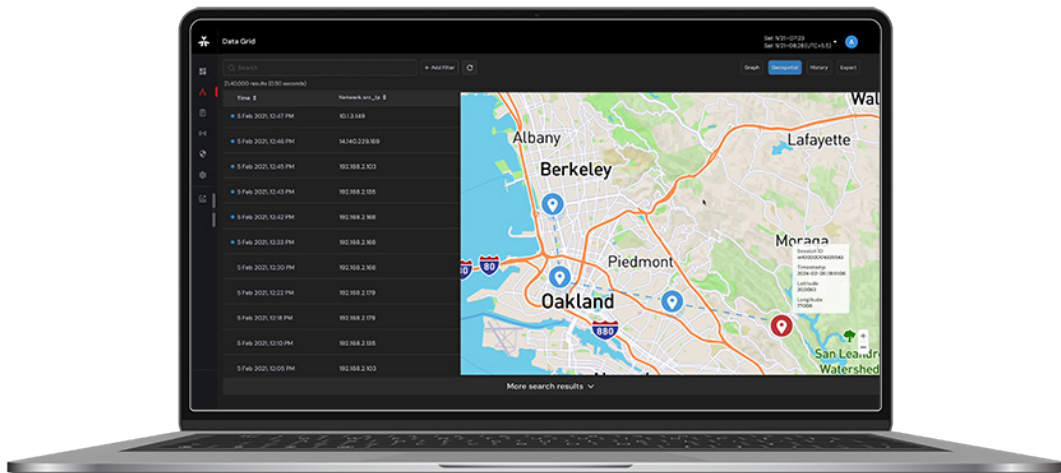


# AI Counter-Terrorism Geospatial Analysis

Geospatial analysis enables security agencies to visualize data in the context of space and geography, providing insights that can lead to better, more informed decision-making. It is a powerful tool for addressing complex issues involving location-based factors. This is a useful tool for counterterrorism and cross-border crime prevention.

## Key Capabilities

- Plot location details on an offline world map up to street level.
- Geofencing to filter sessions within defined areas with the help of various shapes. Also, there is an option to filter sessions by latitude and longitude on the map.
- Geoline display for national and international borders.
- Movement tracking of suspicious targets by plotting the movement footprints of the target along with location details and time stamps.
- Auto-focus on specific areas of interest where the events have happened by zoom in/out feature.
- Measurement tool for measuring the distance between two points.
- Import/export of positional information.
- Import/export of map images.



- Density grid or heatmap to display the event concentrations within an area.
- System support to search and display saved location by name.
- Proximity search to filter out an event within 50 km of defined geofenced area.
- Conversion of grid to latitude/longitude data and vice-versa.

#### Advantages:

- Allows the analyst for enhanced intelligence in tracking the movements of persons of interest and detecting suspicious patterns.
- Analysts can gain valuable insights, make informed decisions, and respond effectively to neutralize national security threats by combining communication data with geospatial analysis.

## About Vehere

Vehere is a new-age Cyber Defense software company specializing in AI Cyber Network Intelligence. For more than a decade, Vehere has been supporting counter-terrorism analysts in Defense & Intelligence communities. Vehere is now trusted by cyber-analysts in Fortune 500 companies, including Telecom, Financial Institutions, and Smart cities to protect their critical infrastructure against real-time cyberattacks.

Vehere preserves fundamental principles of privacy and civil liberties. We proactively defend your cyberspace by cross-leveraging our expertise between national security and enterprise security.



© 2025 Vehere. All rights reserved.

Vehere and Vehere Logo and product names referenced herein are trademarks of Vehere. Unauthorized use, duplication, or modification of this document in whole or in part without the written consent of Vehere is strictly prohibited.